

SAFE SCHOOLS

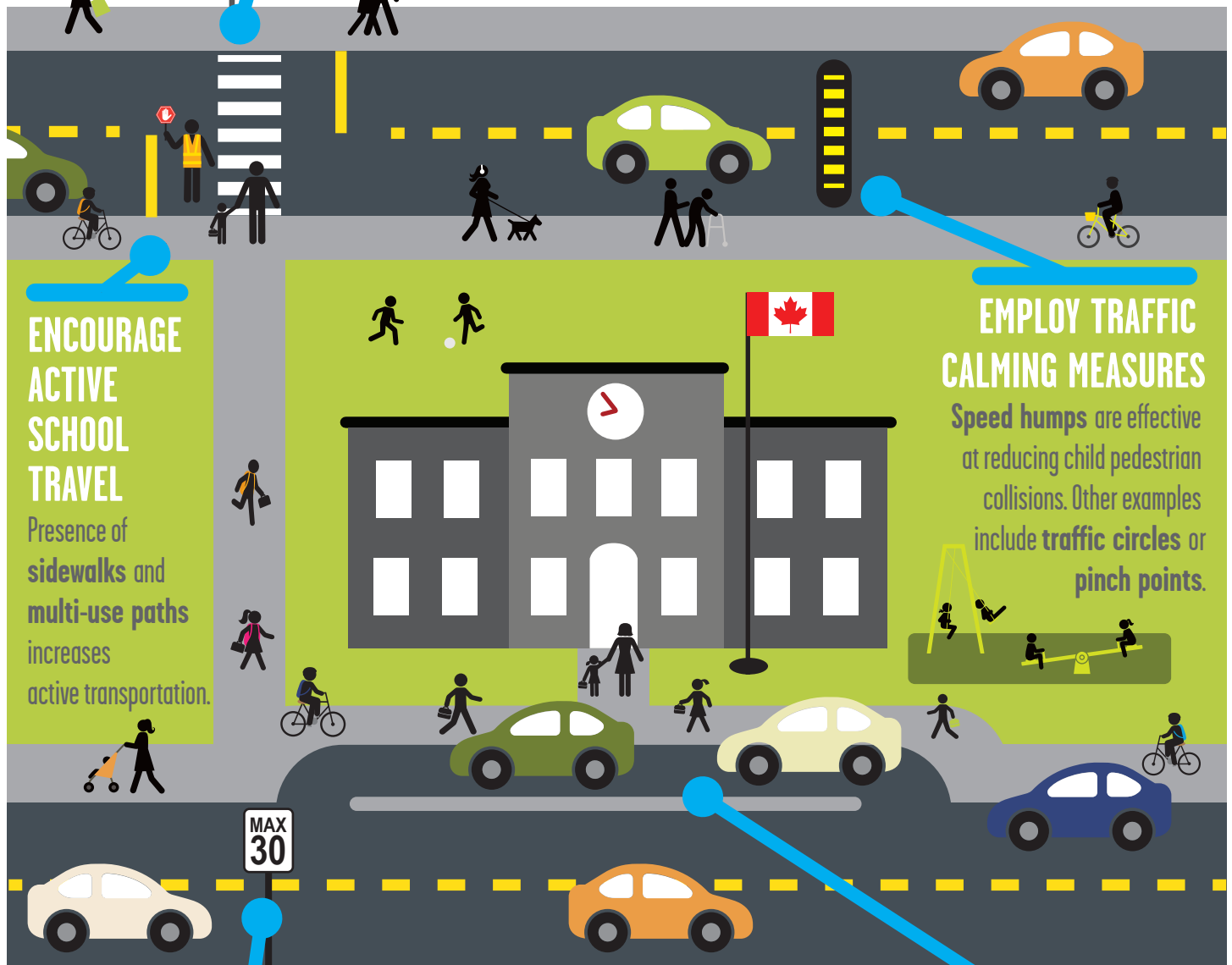
Various changes to the built environment around schools can help lower the risk for pedestrian injuries and ensure kids get to and from school safely.



parachutevisionzero.ca

ENSURE SCHOOL CROSSINGS AND MARKED CROSSWALKS ARE AVAILABLE

Most collisions within school zones occur at **midblock locations**, not intersections.



ENCOURAGE ACTIVE SCHOOL TRAVEL

Presence of sidewalks and multi-use paths increases active transportation.

EMPLOY TRAFFIC CALMING MEASURES

Speed humps are effective at reducing child pedestrian collisions. Other examples include traffic circles or pinch points.

REDUCE SPEED LIMIT IN SCHOOL ZONES

Pedestrians have been shown to have a 90% chance of survival when struck by a car travelling at **30 km/h or below**, but less than 50% chance of surviving an impact at 45 km/h.

DEVELOP SAFE SCHOOL DROP OFF AND PICK UP PLANS

Dangerous driving behaviours **in and around student drop-offs** increase the risk of pedestrian motor vehicle collisions.

For more on the research, visit parachutevisionzero.ca/references